



# THE THATCHAM POSTMARK

THATCHAM and DISTRICT PHILATELIC SOCIETY  
WINTER EDITION JANUARY 2024



## The Chairmans Report

Well another year has passed and the Society is still extant although with a reduced membership. Westbex went well with very good visitor numbers such that several societies asked how we did it !

We had several Society Visitors with interesting topics and also a few of our members took over some evening sessions as well.

Mike Ward is recovering quite well but is still not able to resume as Treasurer and so Mike Smith has now taken over the role permanently.

The Auction data is on page 4. There were not that many members present for bidding but the Postal bids were quite good and at least the Society made a profit.

We look forward to Westbex 24 in March and hope for another popular event.

Barney Bardsley - Chairman

Year 58

Issue 156

*Inside this issue:-*

*Front page –Chairman`s report*

*Page 2 - Pictures*

*Page 3 - Meetings data*

*Page 4 - Meetings data*

*Page 5 - Meetings data*

*Page 6 - Data and pictures*

*Page 7 - Websites, Royal Mail Issues, Society data.*

*Back page - Club Stamps, Future Events, Society data.*



The Christmas Competition Winners  
with the Judge Mike Smith

*For further information on anything in this newsletter please contact*

*Martin Farr, Editor*

*Tel 01635 866437*

*or*

*Graeme Stewart, Secretary*

*Tel 01635 866942*

# Photo Gallery



An Early Mail Coach



Four Mail Coaches  
1810-40



Britains first Mail  
Coach of 1784



An early American  
goods wagon



Around the Med Cards



Bugle Chocolat



Paul Watkins



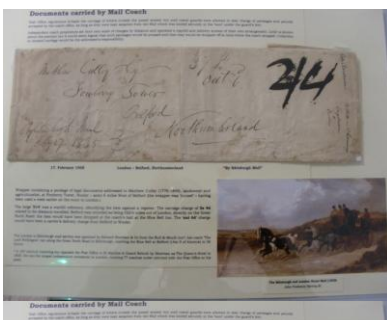
Early delivery  
method



Get out of the way!



Rowland Hill



Documents carried by  
Mail Coach



Liverpool-Argenteuil  
Air Mail 1926



Fez Men



Maltese Buses

## PAST EVENTS

### **Monday 2<sup>nd</sup> October Around the Mediterainean !!! 10 members present**

Well, it should have been but “Wagons” were inserted as well! due to an e-mail error that was sent to all!!!

We also welcomed back Tony Stevens, a member from way back.

**Juliet Keel** got the wagons message and showed some lovely cards of Royal and Mail coaches from the 19<sup>th</sup> Century and some Railway and Mail wagons. Then some nice Post Office vans and wagons. Then, just in case she displayed some nice colourful cards from around the Med just to finish off.

**Dave Tanner** then showed some nice cards of wagons etc. He said that wagons in the USA were for cargo and for transporting goods from coast to coast. They travelled about 15-20 miles a day and just at walking pace. Then he spoke about the history of wagons in the USA and showed a great picture of an early Convestoga wagon from about 1770.

To end the displays **Graeme** showed some lovely cards of wagons, a great card of the very first mail wagon from Bath to London which stopped at Thatcham in order to change the horses. He finished with cards showing some wagons at the Army Depot at Thatcham.

We believe that the November meeting will still be “Wagons” but who knows!

### **Thursday 19<sup>th</sup> October Paul Watkins Entertains. 15 members present**

Paul showed a great display of letters and postal items that he had been acquiring for many years. He started with some 17<sup>th</sup> century envelopes that were all franked and signed for, several from the city of York, some heavy letters to London, a large document carried by a mail coach and three nice Roland Hill picture sheets and many examples of the local Post Offices of the era that produced their own hand stamps. Then quite a few 4d post and city of York Mulready sheets. In 1855 you could bring your own envelopes to be franked and sent on. It was a great display of all types and methods of `old` mail letters and cards showing a range of methods of `postage`.

In part 2 Paul showed a lot of early postcards and many varieties of newspaper wrappers so that their clients could receive a copy. Then quite a collection of Anglo-French mails from 1876 up to 1820. Then many sheets of `Late Mail` which did not meet the ^pm deadline for posting. Then he spoke about and displayed lots of British early airmail covers and letters to and from France and several letters that were sent from London by train to be trans-Atlantic mailed and some of which had `late submission` costs applied.

All in all a great display of his wonderful collection and with very interesting and knowledgeable explanations of it all. Thank you Paul.

### **Monday 6<sup>th</sup> November Around the Med !!!! 10 members present**

**John Mills** started the afternoon by displaying two full boards of French postcards and missives that were almost all about chocolate and the manufactures in France. John spoke about its preparation and packaging which was shown on many of the display items

It was obvious that the French are great consumers of chocolate and have numerous factories devoted to it production, particularly in and around Paris. A great display.

Next up was **Juliet Keel** and she showed lots of pictures and cards from many places around the Mediterranean. Gibraltar, Spain, South France, Italy -Venice and Rome. and several sheets of stamps as well. Then cards and letters from Egypt, and the Nile and many other places that she had visited on her travels.

**Mike Smith** then showed a sheet of Maltese stamps and spoke at length about the most densely populated country in the world! Also how Malta was awarded the George Cross for services rendered to the Allies in WW2.

**Dave Tanner** was next and he showed pictures and cards of the area and told us all about Maltese buses !

**Graeme Stewart** started part two by showing lots of cards and covers all addressed to Newbury from all around the Med – Egypt, Italy and Spain among others and also a nice Post Box sheet.

**Martin Farr** did not have any Mediterranean items but he showed some “Wagons” pictures all about early mail transportation that had travelled through Newbury that he had just acquired – the Bath Mail of 1784 and

And that was the end of the Monday meeting.

#### Thursday 16<sup>th</sup> November The Society Annual Auction 20 members present

Number of lots	771
Number of lots sold	161
Unsold lots	610
Total Money taken on night	£339
Total postal bids	£445
Overall total	£884
Less cheques paid to Vendors	£750
Less printing of catalogues	£85
Final total of	£49
Plus sales of club stocks	£8.46
Plus temporary membership	£8.00
Total income to Society Funds	£16.46

#### Monday 4<sup>th</sup> December Social Afternoon – Quiz, Social and `Exhibitions`

**Alan Cross** started the afternoon by showing a nice board of colourful mini sheets exhibitions from around the world – particularly Australia and Malta and 5 lovely colourful sheets of stamp exhibitions from Australia. Very nice.

**Barney Bardsley** then showed us some nice sheets of stamps all relating to the 1937 Philatelic Congress and also the Stamp Exhibition of 1912.

**Nathan Gregory** was next and he displayed exhibition sheets National Philatelic Exhibition sheets from around the world. It was well laid out well documented. The sheets were mainly from London, Australia, New Zealand and Europe with a very nice Stampex Exhibition cover from 2006. A great display of material.

There was a quiz at half-time all about the names of shops –

Not so fast flower = Waitrose.

**John Mills** then showed us a great long exhibit of sheets of four colourful postcards from all around the world. depicting scenic views, local exhibitions and workings, castles, houses and native activities. Nice interiors of buildings and some nice cards of the British Empire Exhibition of 1923-24 at Wembley. A great display.

**Juliet Keel** then showed us International Exhibition cards from Europe and the world. Coronation exhibit cards from the 1924 Exhibition. Juliet joined the Centennial when they were in Canada and she showed cards of the pavilion and exhibits. Very nice display.

**Graeme Stewart** was the last to exhibit and he showed letters and cards to Newbury from the International Stamp Exhibition and from the Antarctic Exploration. These were very nice indeed. The finally some details about the British Empire Exhibition of May – October 1924. All rather nice.

**Thursday 21<sup>st</sup> December – Christmas Social Evening, Competitions and Quiz.**

Everyone came up to look at the competition displays that were presented for judging by Mike Smith from Hampshire Federation who commented on the entries and selected the winners of each category. There was a Christmas buffet at half time with wine and very nice buffet food supplied by Juliet and Martin. The Christmas quiz was set by Barney with 30 questions all about Philately and the winner with 20 correct answers was the Judge Mike. He passed the prize on and so Nathan, with 16 points was declared the winner and presented with a box of chocolates.

Juliet and Valerie were both presented with a bunch of flowers for the catering tasks and the Single Sheet Salver was voted on by the members present and the Judge, Mike Smith, was presented with a bottle of wine.

The Jubilee Cup	won by	Barney Bardsley	1d Blacks
The Reg Rhodes Shield	won by	Nathan Gregory	Philatelic Exhibitions
The Keith Foster Trophy	Won by	John Tingey	Irish Cancels on 1d Stars
The Frank Record Trophy	Won by	Alan Cross	Postal Usages
The Novices cup	No entries		
The Single Sheet Salver	Won by	Nathan Gregory	Postal Union Congress

**THE POSTCARD PAGE (well sort of)**



**Greek Ladies and Gents**



**The Bath Mail**



**The First Horseless Mail Van**



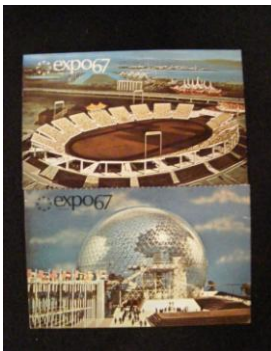
**The Auctioneer  
Mike Smith**



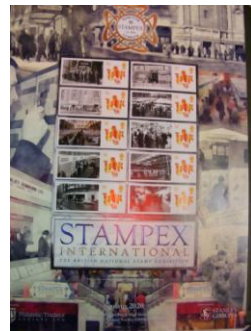
**The Recorder Jeff Rogers  
The Invoicer Barney Bardsley**



**The Box Boys**



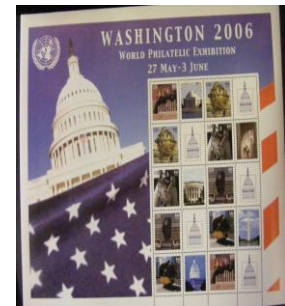
**EXPO 67**



**STAMPEX 2015-6**



**Letters to Newbury  
from Antarctica**



**Washington 2006**

## THE BACK PAGE

### “Club Stamps” corner

**Club Stamps** are well looked after by **Dave Tanner** who will be present at most of our club meetings. There will usually be a Club Table at all stamp fairs held at the Memorial Hall.

#### Accessories

Dave is also the contact for the purchase of all philatelic accessories – most of which are available to be ordered at a small discount.

Stamps of the World Catalogue set (normal price - £200 ) – TDPS price £155 + p&p

Collect British stamps (normal price - £12.95 ) – TDPS price £10 + p&p

GB Concise (normal price - £30) – TDPS price £23.50 + p&p

A small percentage always goes to club funds. Give Dave a ring on 01256 780467

#### USEFUL WEBSITES

New issues at [www.tonybray.co.uk](http://www.tonybray.co.uk)

Royal Mail for all past and new issues at [www.royalmail.com](http://www.royalmail.com)

The society website with lots of data and links at [www.tdps.co.uk](http://www.tdps.co.uk)

Avion Thematics – one of the best organised sites at [www.avionstamps.com](http://www.avionstamps.com)

\*\*The Avion website now incorporates the stock listings for Phoenix International\*\*

Portsmouth stamp shop for awkward items and covers at [www.portsmouthstampshop.co.uk](http://www.portsmouthstampshop.co.uk)

A.B.P.S for all the latest philatelic news, events and links at [www.abps.org.uk](http://www.abps.org.uk)

#### New Issues

**The post Office has not issued any data as yet**

#### Future Programme and Events

Monday	8 <sup>th</sup> January	Famous Women
Thursday	18 <sup>th</sup> January	Members new acquisitions
Monday	5 <sup>th</sup> February	Heros
Thursday	15 <sup>th</sup> February	John Mills - The Gold Coast
Monday	4 <sup>th</sup> March	Trains
Thursday	21 <sup>st</sup> March	`The Curious Case of the Common` with Andy Kemp and G.C. Ephemera
Monday	1 <sup>st</sup> April	Maps
Thursday	18 <sup>th</sup> April	Phillip Cant with WWII – 1989-1995 !

#### Officers of the Club

#### Committee

##### President

<b>Chairman</b>	Barney Bardsley	07770 376235	<b>Jeff Rogers</b>	07740 450166
<b>Vice Chair</b>	Still vacant		<b>Paul Watkins</b>	07870 851837
<b>Secretary</b>	Graeme Stewart	01635 866942	<b>John Mills</b>	
<b>Treasurer</b>	Mike Smith	01189 333257	<b>Jim Andrews</b>	01635 297390

<b>Archivist</b>	Still Need One	<b>WestBex</b>	Graeme, Martin and Ann	<b>Publicity</b>	Martin Farr
------------------	----------------	----------------	------------------------	------------------	-------------